

# News from Finland

Mari Laakso & Panu Muhli  
Nordic INSPIRE Network | Keflavik  
1.-2.10.2018

16.10.2018



# Report on spatial data policy - coordinates for development

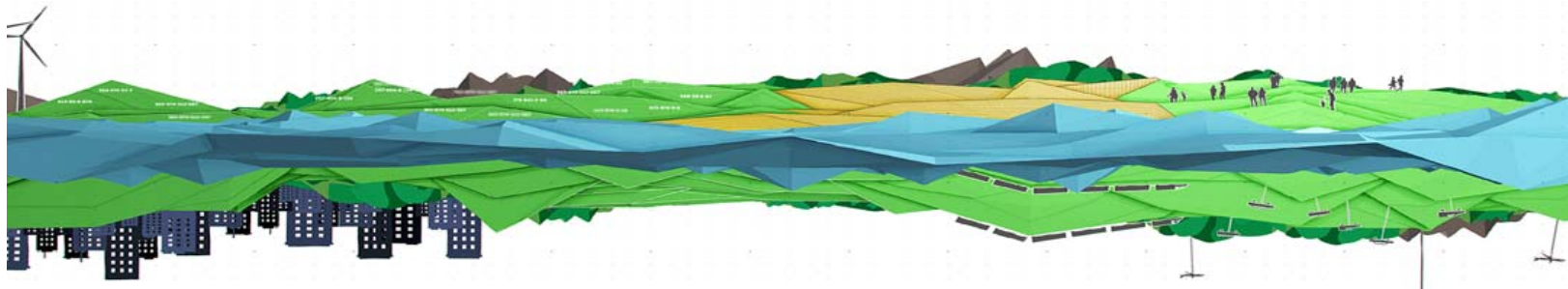
Initiative of Ministry of Agriculture and Forestry

**Interoperable, accessible and efficiently produced spatial data**

Report available in English och på svenska

<https://mmm.fi/paikkatietoselonteko>

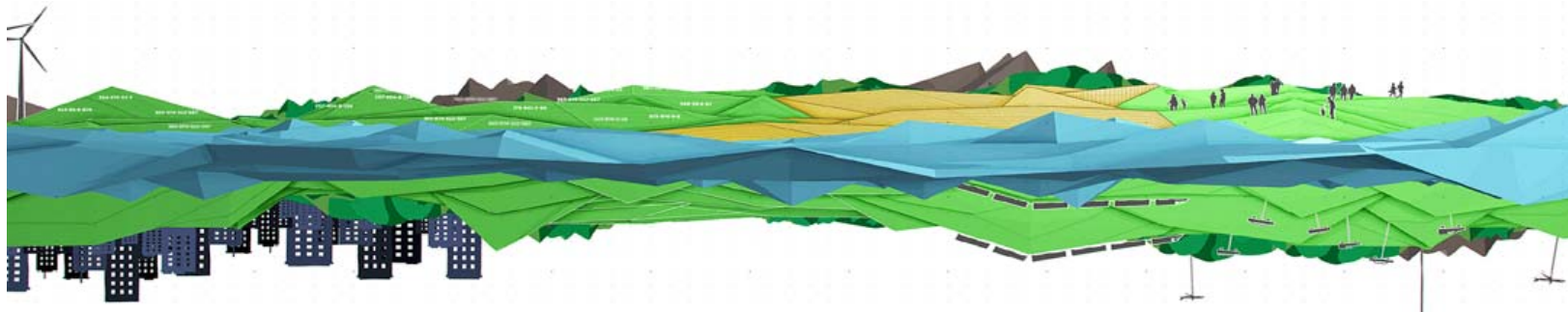
- **Happened so far:**
  - Preliminary debate in Parliament in May 2018.
  - Committee handlings in September-October.
  - Meanwhile the action plan is drafted further.



# Policy Report on Spatial Data - coordinates for development

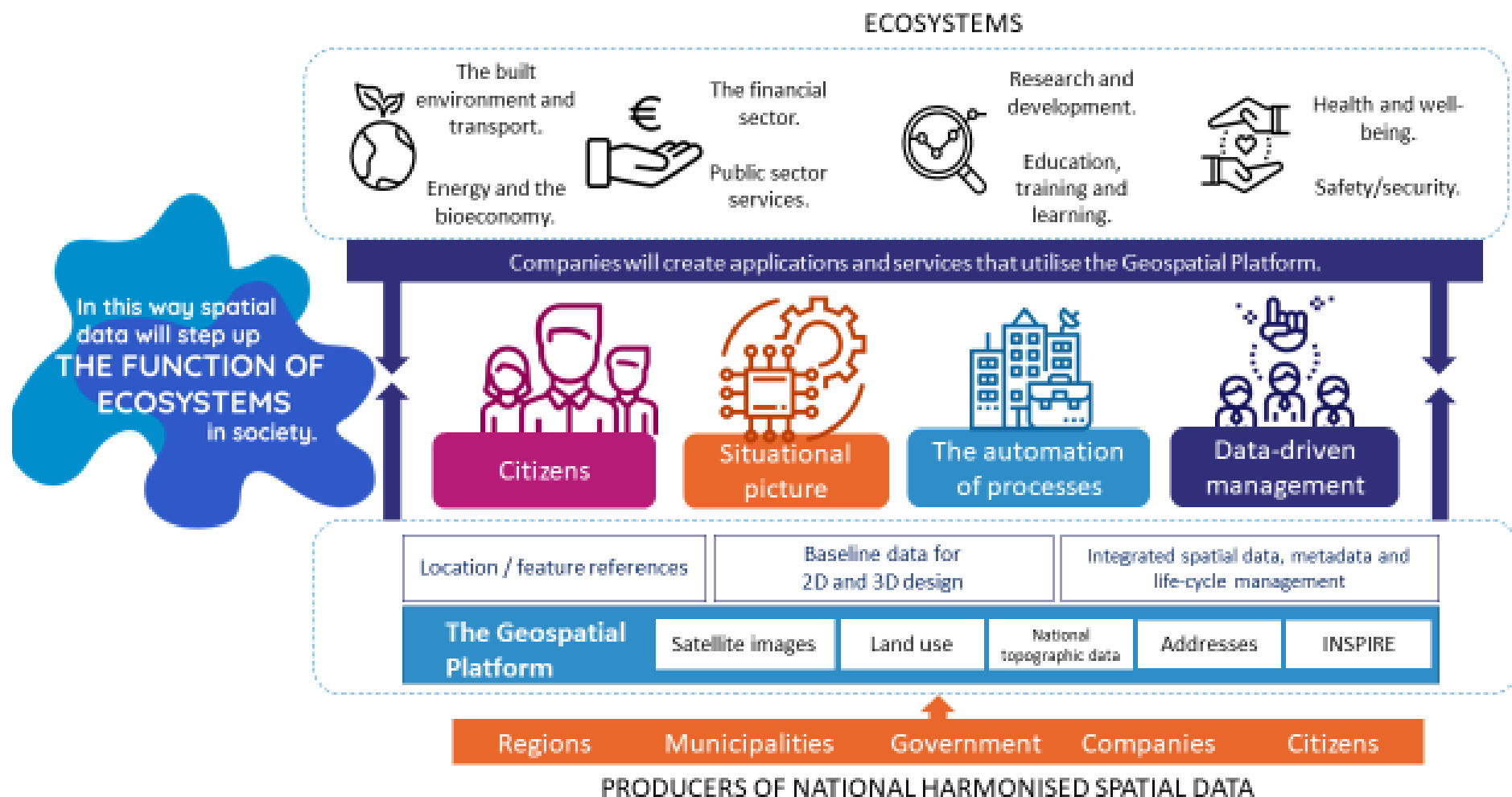
## Seven actions introduced:

- Legislative reforms to ensure progress
- Ensuring high-quality address information
- Access to exact positioning for all
- Creating a common spatial data platform for security authorities
- Developing a common spatial data ecosystem
- More efficient cooperation via a new cooperation body
- Enhancing knowledge and expertise on spatial data



# The Geospatial Platform

<http://www.paikkatietoalusta.fi/en>





## The National Topographic Database

The National Topographic Database programme will create a digital and harmonised data resource, i.e. a national topographic database that meets the current demands in Finland.



## The address information system

A new address information system that will improve civil protection and logistics, for example, and make them more efficient.



## The Technical Geospatial Platform

The sub-programme is responsible for developing the required services, infrastructure and enterprise architecture for the geospatial platform.



## Land Use Plans

Drafts the digital preconditions of the new Land Use and Building Act, aims at the digitalisation of the land use planning processes based on international standards.

16.10.2018



food and natural resources





## INSPIRE

An environment for joint use by the authorities is to be created to help implement the obligations of the INSPIRE Directive.



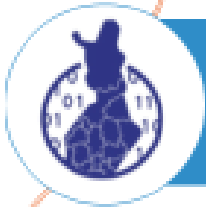
## Satellite image distribution and processing service

Realises a national processing and distribution service for satellite imagery on top of the Geospatial Platform.



## Support Services for Geospatial Data

Provides support needed for the Platform and suggests a solution for improved organisation for the joint use of geospatial information in Finland.



## The Regional spatial data infrastructure

Aims supporting the building of harmonised geospatial services for the regions.

16.10.2018

