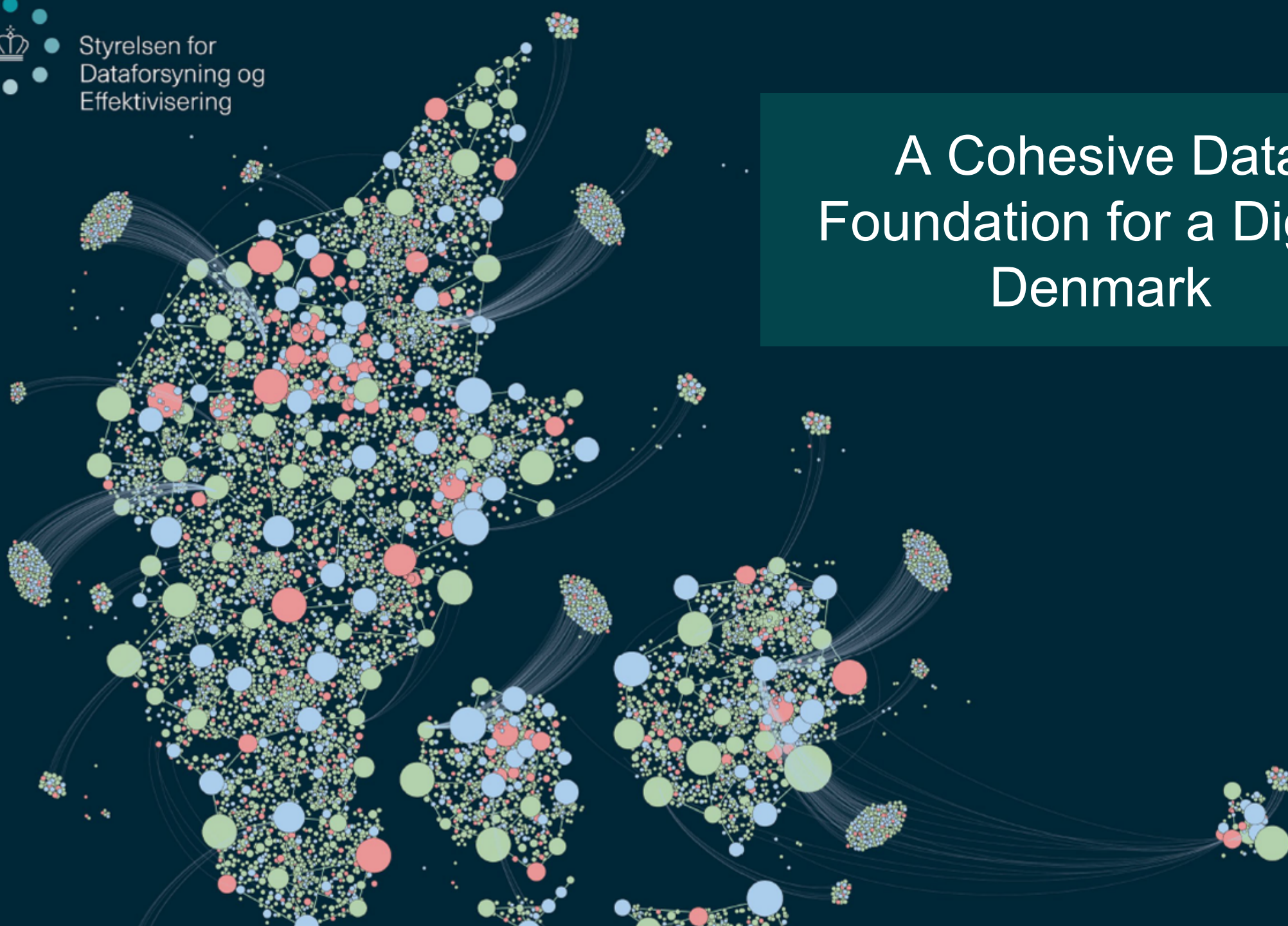


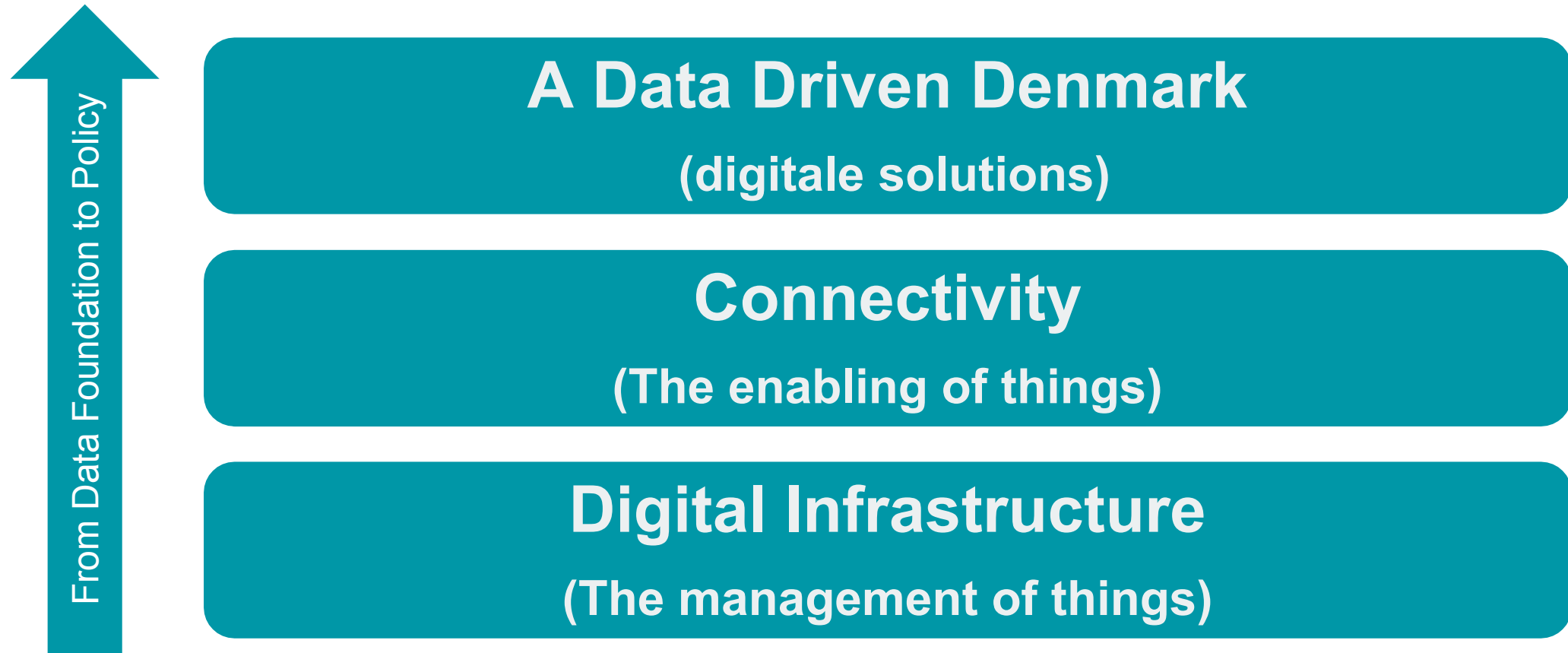
# A Cohesive Data Foundation for a Digital Denmark



# Approach to Developing the Strategy

1. The current strategy set out the “new organizational direction” for SDFE and placed us on the map – *we need to evolve and not revolutionize the organization*
2. SDFE are 4 years the wiser – *we can describe clearer our scope and better pass on the message externally*
3. Substantial movement in the ‘data landscape’ – *data is no longer ‘just’ data and different use and needs demand different approaches*

# Strategic Direction in SDFE – Model



# Trust in digital society is built on good and cohesive digital data

## Trust in data-based decisions must be established and maintained

Protecting legal rights and preserving trust in the public sector must remain in focus as public authorities serve citizens and businesses on the basis of digital decisions and increased self-service. The data on which decisions are made must be clear, correct and transparent – within and between all public agencies, authorities, etc.

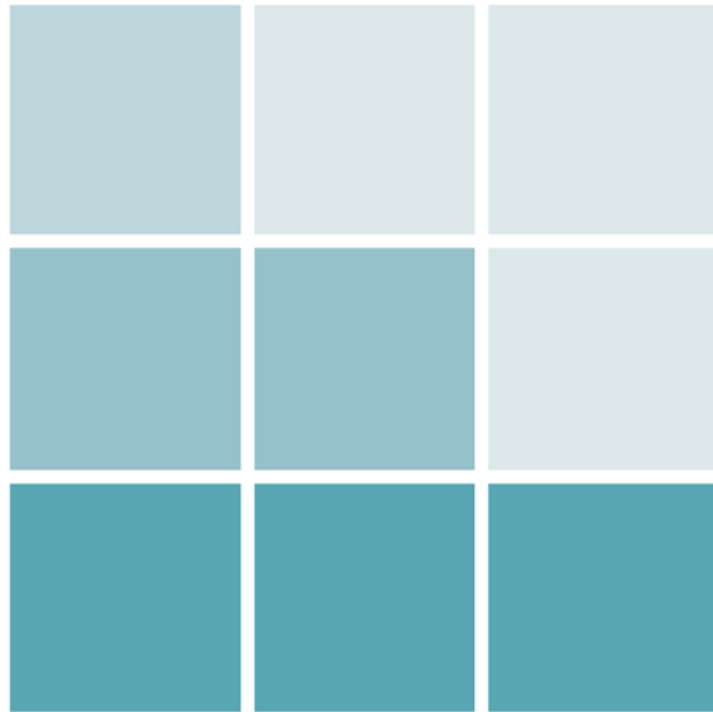
## Major adjustments in society require support

The challenges of climate change and the need to modernise public administration are evident across all sectors of industry and civil society. To support major changes in society, data must be available for use and reuse across public authorities and sectors. Furthermore, our data on geographic changes and Danish territory must be correct, accessible and compatible with the data of other public authorities.

## Unleashing the potential of a smarter society

New technologies for the definition and management of an ever-evolving society offer the public sector new opportunities to develop better and more targeted services. These same technologies also enable businesses to develop new products. To understand and optimally deploy these new technologies in the future, we must have access to precise time and location data on objects in motion.

# The Danish Agency for Data Supply and Efficiency has three key objectives to strengthen the foundation of digital society



**We strive to help create digital solutions of strategic importance to society**

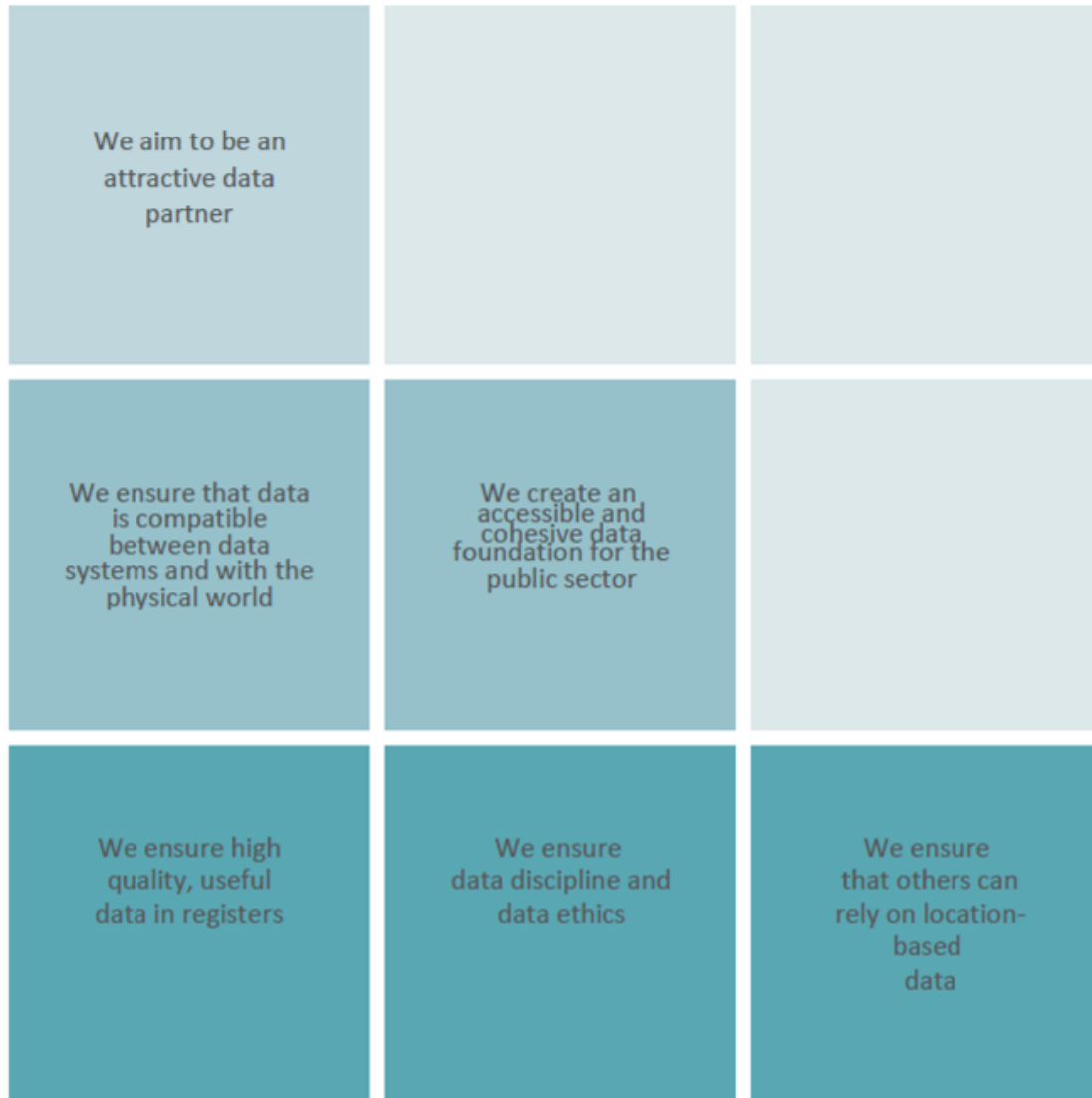
We help our partners unleash the data potential in their tasks and businesses that are relevant to society.

**We aim for accessibility and cohesiveness in data to support major changes in society**

We make data accessible so that it can be utilised and coordinated by public authorities and administrations, and so that society is able to effectively implement the major transformations of tomorrow.

**We aim to create a current and authoritative data foundation**

We aim to create a data foundation that is geographically accurate, up-to-date and in the correct resolution. Data must be transparent and with the requisite quality that makes it reliable for use by public authorities, citizens and businesses.



We strive to help create digital solutions of strategic importance to society

We aim for accessibility and cohesiveness in data to support major changes in society

We aim to create a current and authoritative data foundation



# An Example..

Effective and user-friendly digital solutions do not materialise out of thin air. They must be capable of functioning in a complex society and across sectors and administrative departments.

Cohesive data is the key to developing effective digital solutions that facilitate the everyday lives of citizens, strengthen businesses, and support efficient public administration. In other words, data must be compatible and interchangeable between systems and organisations. This is made possible by adhering to common principles and standards, and by ensuring the necessary quality and orderliness of the data foundation.

The fact that citizens of Denmark can report a change of address with just a few clicks is due not only to the secure and easy-to-use digital solution found on the borger.dk portal. It is made possible by the cohesive and compatible underlying data exchanged between the address register and the central register of persons – data that also enables municipalities, banks, insurance companies, etc. to record the change of address in their systems.

To repeat: this capacity rests on a foundation of solid, well-structured and up-to-date data and registers. Having a solid and cohesive data foundation is what enables us to create user-friendly digital solutions in Denmark.

